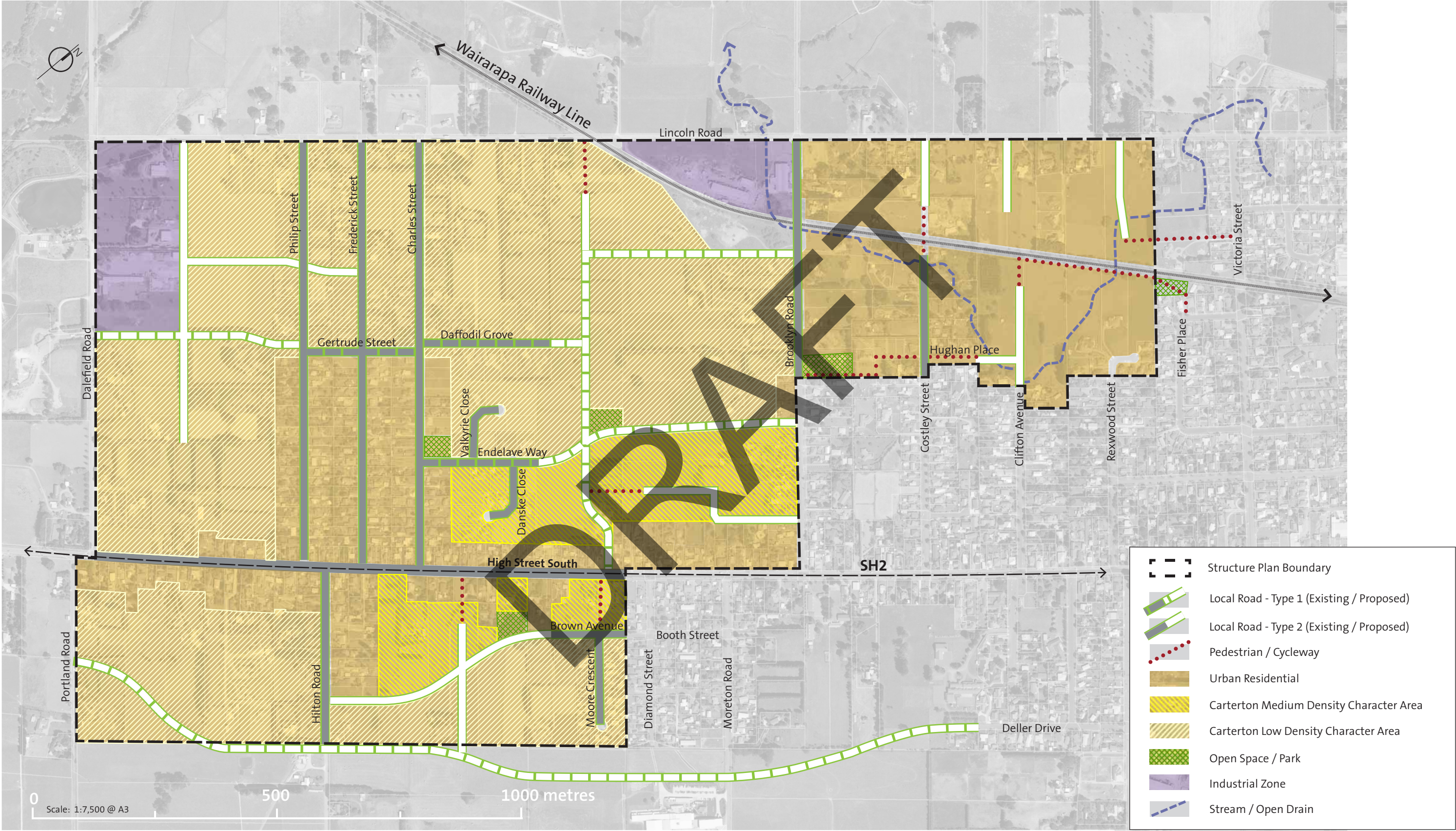


Structure Plan



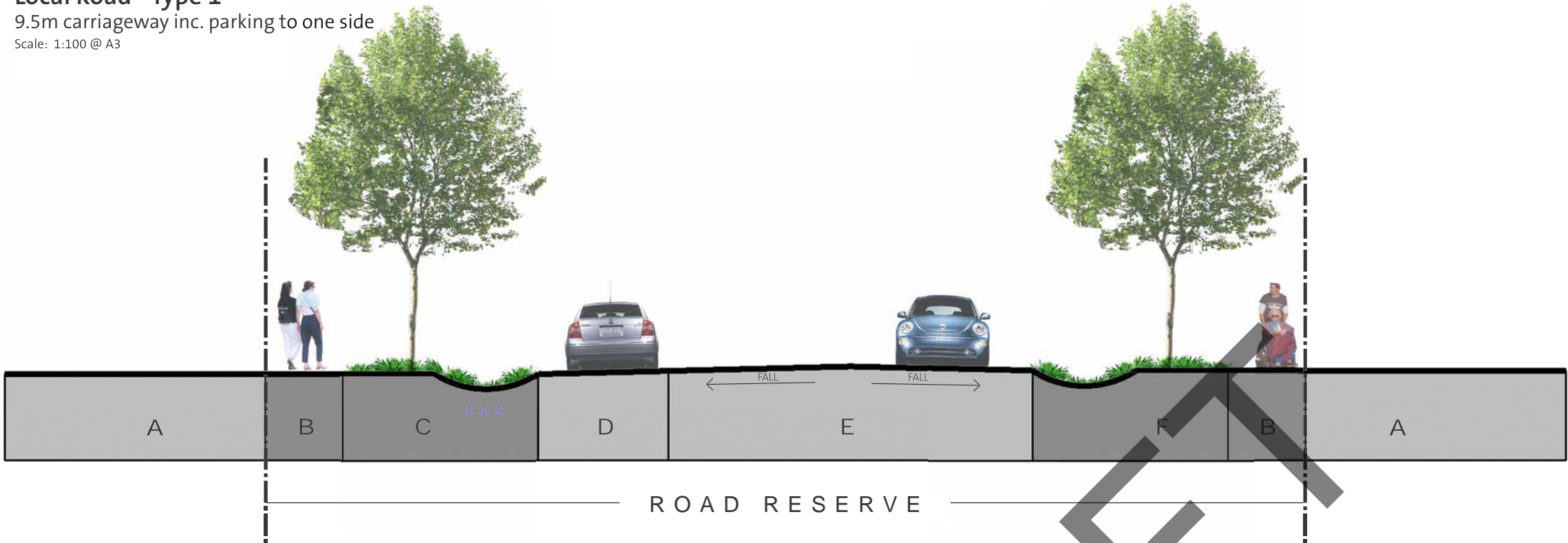
Carterton South Structure Plan
Draft District Plan Change

March 2010
Revision 00

Local Road - Type 1

9.5m carriageway inc. parking to one side

Scale: 1:100 @ A3



Note:

Carriageway in accordance with NZS 4404:2004

Parking lanes to be omitted on all street corners & 90 degree bends.

Street trees / vegetation to comply with CDC Urban Street Tree Policy and be approved by CDC Parks and Reserves Manager.

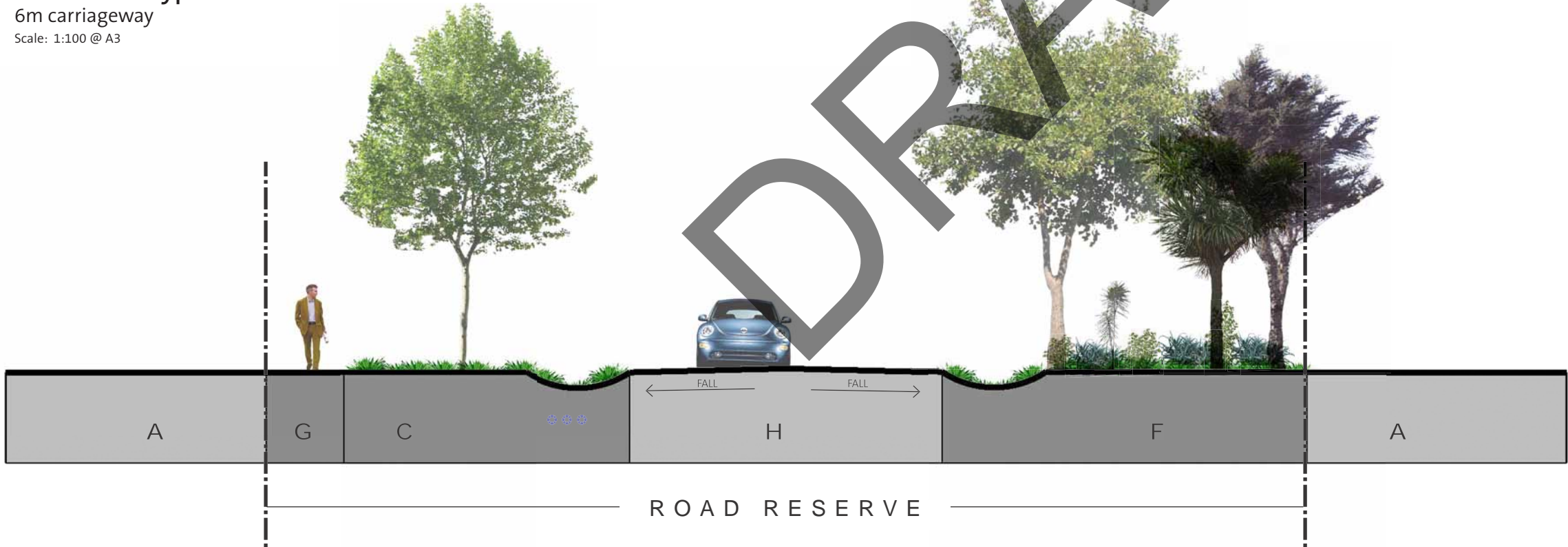
- A - urban residential
- B - 1.5m pedestrian footpath
- C - minimum 3.1m berm with swale drain to road side, underground services
- D - 2.5m parking lane
- E - 7m carriageway (9.5m inc. parking lane)
- F - minimum 3.1m berm with swale drain to road side

total road reserve dimension - 20m

Local Road - Type 2

6m carriageway

Scale: 1:100 @ A3



Note:

Carriageway in accordance with NZS 4404:2004

Street trees / vegetation to comply with CDC Urban Street Tree Policy and be approved by CDC Parks and Reserves Manager.

- A - urban residential
- C - minimum 3.1m berm with swale drain to road side, underground services
- F - minimum 3.1m berm with swale drain to road side
- G - 1.5m pedestrian footpath
- H - 6m carriageway

total road reserve dimension - 20m